

TATA STEEL
WeAlsoMakeTomorrow



 **Galvano**
Value Redefined
Coated Products from Tata Steel



TATA STEEL
WeAlsoMakeTomorrow

Tata Steel Limited, Tata Centre, 43 Jawaharlal Nehru Road, Kolkata 700 071
Tel 91 33 2288 7051, Fax 91 33 2288 2563
www.ecafez.com | www.tatasteel.com

Contents

• Introduction	2
• Galvanising Through State-of-the-Art Line	2
• What does Galvano Stand For	3
• Why use Galvano?	4
• The Galvano Edge	5
◆ Appliances	6
◆ Panel	7
◆ Bus Body	8
◆ Dish Antenna	9
◆ General Engineering	10
◆ PEB & Solar	11
◆ Retail	12
◆ Others	13
◆ Product Identification	14
◆ Thickness Tolerance Guarantee	14
◆ SKU Basket/Product Offerings	15
• Packaging and Labelling	16
• Storage Instructions	17
• ACE+ Service Centre Details	18
• Sales Office	20



Introduction

“Imagination is the beginning of creation. You imagine what you desire, you will what you imagine and at last you create what you will.”
- George Bernard Shaw

Galvano is Tata Steel's tribute to the ever-changing pattern of steel demand, it is the first true Zero-Spangled (ZS) Galvanized Plain (GP) steel offering in the country.

Unlike the ordinary spangled or crushed spangled products available in the market, Galvano stands out with unmatched surface finish and mechanical properties that have the capability to meet the stringent customer norms, also complies with IS 277: 2018 norms.

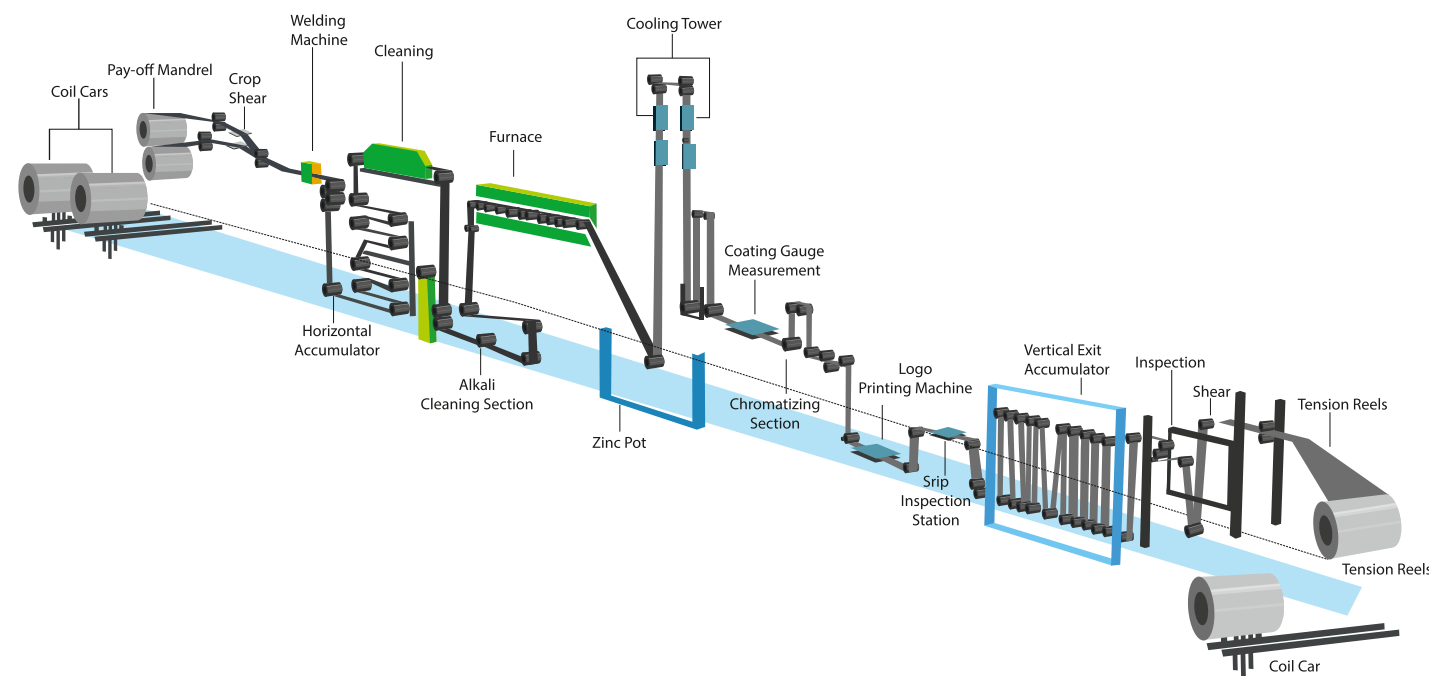
It is environmentally safe and economically advantageous. With Galvano the definition of quality has been redefined by raising the bar of strength, durability, performance and versatility.



Galvanising through State-of-the-art Line

A product of the **Continuous Galvanising Line (CGL-2)** at Tata Steel's world class facility in Jamshedpur. The line has been designed to cater to the high-end galvanized steel requirements of Automotive, Appliance, Panels, General Engineering, Solar and other segments. The high standards of quality are maintained by advanced levels of automation, renowned suppliers and a highly motivated and well-trained team.

Process Flow of Galvanising Line



What does Galvano Stand For

Galvano redefines its value-in-use for users by offering high performance products with unrivaled quality and service, second to none! The surface quality makes it ideal for manufacture of visible components. In addition, to being RoHS-compliant, it also offers superior paint adhesion for unmatched surface finish.



Why use Galvano?



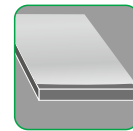
Source Authenticity

The special UV print can only be seen under an ultraviolet light which causes it to fluoresce



Consistent Thickness

Close thickness tolerances and high surface quality ensure a predictable consistency



Absolute Flatness

Flatness in Tata Steel's Galvanized Steel products is much superior to the offerings of other companies. This ensures better finish of the end products one of the latent needs of consumers



Highest Corrosion Resistance

Superior corrosion resistance ensures that the end-products manufactured by our customers meet their life expectancy



Uniform and superior Zinc Adhesion

Uniform and Superior zinc adhesion avoids zinc peel off and crazing during fabrication thereby ensuring end product durability and finish



Superior Paint Adhesion

Its true zero-spangled surface ensures the best surface finish in painting applications due to superior paint adhesion when compared with painted surface of Ordinary or Crushed Spangle GP



Optimum Malleability and Ductility

Close control of chemical composition of steel ensures best mechanical properties key for forming applications



Eco-friendly

This product is eco-friendly as it does not use any toxic chemicals



Standardised Packaging

Sustainable LDPE and HDPE packaging with metal strapping will preserve sheet quality



Dedicated Technical Support

Backed by a dedicated technical team to collaborate closely with customers, reinforce the manufacturing process and generate value in an increasingly competitive market

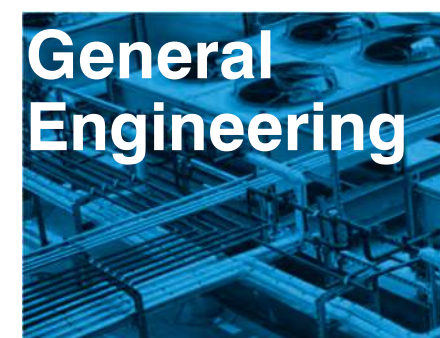


Robust Channel and Support Network

Pan India presence will ensure timely delivery and support availability for technical queries

The Galvano Edge

Serving a spectrum of applications



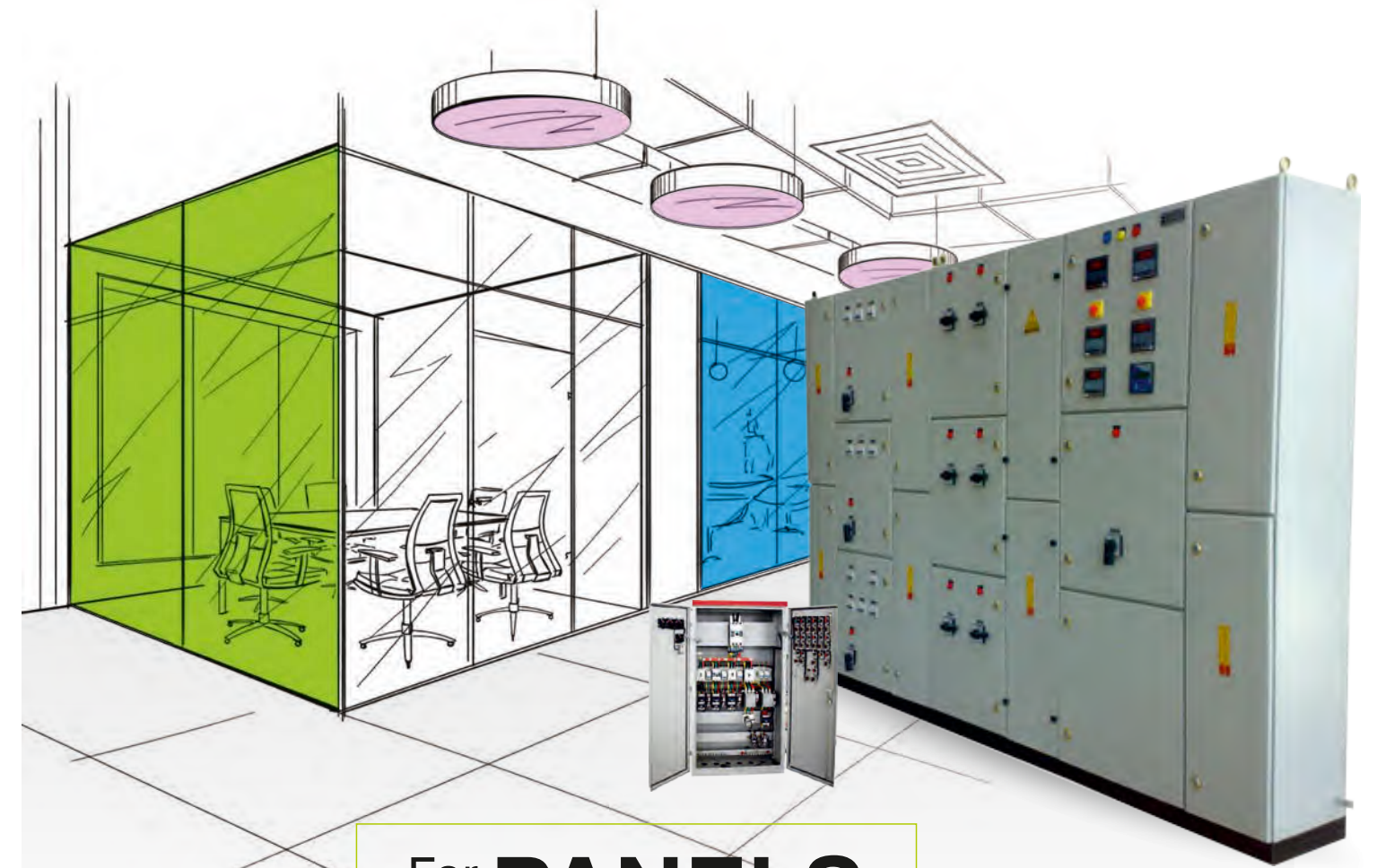
MECHANICAL PROPERTIES										
Grade	TDC	Coating (GSM)	Yield Strength (Mpa)		Ultimate Tensile Strength (Mpa)		Elongation (50% GL)	Surface Roughness (Ra)	Skin Passed	Tension Levelled
			Min	Max	Min	Max				
DQ	GLA1	120	250	350	-	410	32	0.8 - 1.6	Yes	Yes
DDQ	GLA2	120	-	240	-	360	35	0.8 - 1.6	Yes	Yes
IF	GLA3	120	-	190	-	330	40	0.8 - 1.6	Yes	Yes
DDQ	GLA4	140	140	260	280	360	34	0.8 - 1.6	Yes	Yes
DQ	GLA5	100	250	350	300	450	30	0.8 - 1.6	Yes	Yes
HIF	GLA7	140	180	240	330	400	35	0.8 - 1.6	Yes	Yes

CHEMICAL PROPERTIES														
Grade	TDC	N (PPM)	C%		MN%		Si%		S%		P%		Al%	
			Min	Max	Min	Max	Min	Max	Min	Max	Min	Max	Min	Max
DQ	GLA1	70	0.035	0.07	0.15	0.4	-	0.04	-	0.02	-	0.025	0.02	0.09
DDQ	GLA2	60	-	0.05	-	0.3	-	0.025	-	0.02	-	0.025	0.02	-
IF	GLA3	40	-	0.0035	-	0.15	-	0.015	-	0.012	-	0.018	0.015	0.06
DDQ	GLA4	60	-	0.0500	-	0.3000	-	0.0250	-	0.0200	-	0.0250	0.0200	-
DQ	GLA5	70	0.0350	0.0700	0.1500	0.4000	-	0.0400	-	0.0200	-	0.0250	0.0200	0.0900
HIF	GLA7	40	-	0.0040	0.4500	0.8000	-	0.1500	-	0.0120	0.0200	0.0400	0.0150	-

For APPLIANCES

Advantages:

- Excellent Drawability
- Absolute Flatness
- Superior Surface Texture and Finish
- Potential for Paint Cost Reduction



For PANELS

Advantages:

- Absolute Flatness
- Enhanced Corrosion Resistance
- No Spring Back Effect
- Superior Paint Adhesion

MECHANICAL PROPERTIES										
Grade	TDC	Coating (GSM)	Yield Strength (Mpa)		Ultimate Tensile Strength (Mpa)		Elongation (50% GL)	Surface Roughness (Ra)	Skin Passed	Tension Levelled
			Min	Max	Min	Max				
DQ	GLP1	80	250	360	-	410	32	0.8 - 1.6	Yes	Yes
DQ	GLP2	120	250	360	-	410	32	0.8 - 1.6	Yes	Yes
DQ	GLP3	275	255	350	-	410	32	0.8 - 1.6	Yes	Yes
IF	GLP4	275	-	190	-	330	40	0.8 - 1.6	Yes	Yes

CHEMICAL PROPERTIES														
Grade	TDC	N (PPM)	C%		MN%		Si%		S%		P%		Al%	
			Min	Max	Min	Max	Min	Max	Min	Max	Min	Max	Min	Max
DQ	GLP1	-	0.035	0.07	0.15	0.40	-	0.04	-	0.02	-	0.025	0.02	0.09
DQ	GLP2	70	0.035	0.07	0.15	0.40	-	0.04	-	0.02	-	0.035	0.02	0.09
DQ	GLP3	70	0.035	0.07	0.15	0.40	-	0.04	-	0.02	-	0.035	0.02	0.09
IF	GLP4	40	-	0.0035	-	0.15	-	0.015	-	0.012	-	0.018	0.015	0.06

MECHANICAL PROPERTIES										
Grade	TDC	Coating (GSM)	Yield Strength (Mpa)		Ultimate Tensile Strength (Mpa)		Elongation (50% GL)	Surface Roughness (Ra)	Skin Passed	Tension Levelled
			Min	Max	Min	Max				
DQ	GLB1	120	250	350	-	410	32	0.8 - 1.6	Yes	Yes

CHEMICAL PROPERTIES														
Grade	TDC	N (PPM)	C%		MN%		Si%		S%		P%		Al%	
			Min	Max	Min	Max	Min	Max	Min	Max	Min	Max		
DQ	GLB1	70	0.035	0.07	0.15	0.4	-	0.04	-	0.02	-	0.025	0.02	0.09

For **BUS BODY**

Advantages:

- Wrinkle Free Side Stretch Panel
- Absence Of Drumming Effect
- Textured Surface
- Better Paint Adhesion
- Improved Weldability



For **DISH ANTENNA**

Advantages:

- Excellent Drawability
- Superior Paint Adhesion
- Enhanced Corrosion Resistance

MECHANICAL PROPERTIES										
Grade	TDC	Coating (GSM)	Yield Strength (Mpa)		Ultimate Tensile Strength (Mpa)		Elongation (50% GL)	Surface Roughness (Ra)	Skin Passed	Tension Levelled
			Min	Max	Min	Max				
IF	GLG4	80	-	190	-	330	40	0.8 - 1.6	Yes	Yes
IF	GLG5	120	-	190	-	330	40	0.8 - 1.6	Yes	Yes

CHEMICAL PROPERTIES														
Grade	TDC	N (PPM)	C%		MN%		Si%		S%		P%		Al%	
			Min	Max	Min	Max	Min	Max	Min	Max	Min	Max		
IF	GLG4	45	-	0.0035	-	0.15	-	0.015	-	0.012	-	0.018	0.015	0.06
IF	GLG5	40	-	0.0035	-	0.15	-	0.015	-	0.012	-	0.018	0.015	0.06

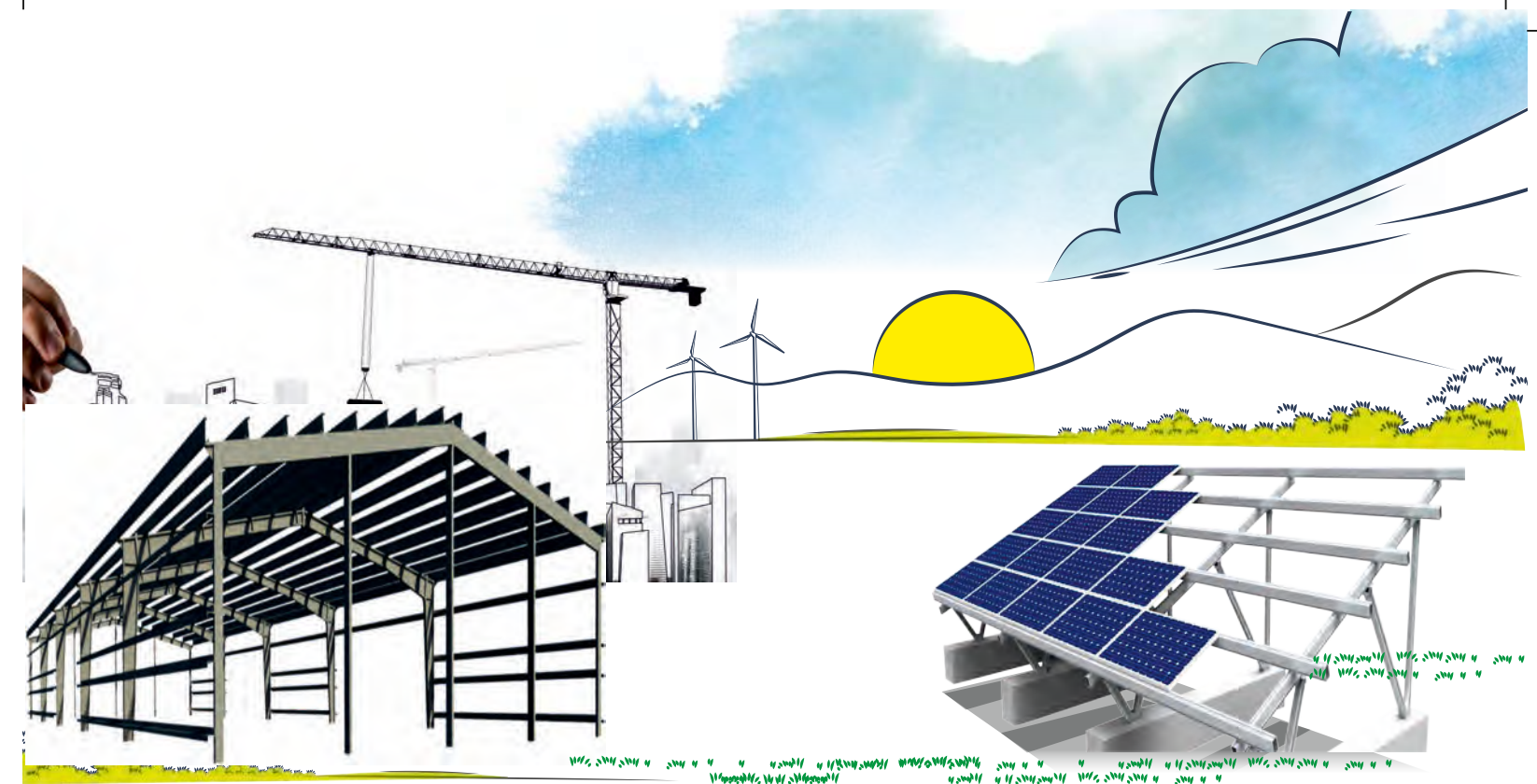
MECHANICAL PROPERTIES										
Grade	TDC	Coating (GSM)	Yield Strength (Mpa)		Ultimate Tensile Strength (Mpa)		Elongation (50% GL)	Surface Roughness (Ra)	Skin Passed	Tension Levelled
			Min	Max	Min	Max				
CQ	CG17	120	250	360	320	500	26	0.8 - 1.6	Yes	Yes
CQ	CG42	120	250	360	330	500	26	0.8 - 1.6	Yes	Yes
CQ	CG45	120	230	350	270	500	26	0.8 - 1.6	Yes	Yes
DQ	GLG1	80	250	350	-	410	32	0.8 - 1.6	Yes	Yes
DQ	GLG2	120	250	350	-	410	32	0.8 - 1.6	Yes	Yes
DDQ	GLG3	120	-	240	-	360	35	0.8 - 1.6	Yes	Yes
DQ	GLG7	180	250	360	-	420	32	0.8 - 1.6	Yes	Yes

CHEMICAL PROPERTIES														
Grade	TDC	N (PPM)	C%		MN%		Si%		S%		P%		Al%	
			Min	Max	Min	Max	Min	Max	Min	Max	Min	Max		
CQ	CG17	70	-	0.08	-	0.40	-	0.04	-	0.02	-	0.035	0.02	0.09
CQ	CG42	70	0.035	0.07	-	0.40	-	0.04	-	0.02	-	0.035	0.02	0.09
CQ	CG45	70	0.035	0.07	-	0.40	-	0.04	-	0.02	-	0.035	0.02	0.09
DQ	GLG1	70	0.035	0.07	0.15	0.40	-	0.04	-	0.02	-	0.025	0.02	0.09
DQ	GLG2	70	0.035	0.07	0.15	0.40	-	0.04	-	0.02	-	0.025	0.02	0.09
DDQ	GLG3	60	-	0.04	-	0.25	-	0.015	-	0.015	-	0.015	0.02	-
DQ	GLG7	70	0.035	0.07	-	0.40	-	0.04	-	0.02	-	0.025	0.02	0.09

For GENERAL ENGINEERING

Advantages:

- Absolute Flatness
- Superior Surface Finish
- Enhanced Corrosion Resistance
- Potential for Paint Cost Reduction



For PEB & SOLAR

Advantages:

- Absolute Flatness
- Superior Strength
- Enhanced Corrosion Resistance

MECHANICAL PROPERTIES										
Grade	TDC	Coating (GSM)	Yield Strength (Mpa)		Ultimate Tensile Strength (Mpa)		Elongation (50% GL)	Surface Roughness (Ra)	Skin Passed	Tension Levelled
			Min	Max	Min	Max				
HSQ	LS16	275	350	450	420	510	16	0.7 - 1.2	Yes	Yes
HSQ	LS17	120	350	450	420	510	16	0.7 - 1.2	Yes	Yes
HSQ	LS18	180	350	450	450	510	16	0.7 - 1.2	Yes	Yes

CHEMICAL PROPERTIES														
Grade	TDC	N (PPM)	C%		MN%		Si%		S%		P%		Al%	
			Min	Max	Min	Max	Min	Max	Min	Max	Min	Max		
HSQ	LS16	70	0.035	0.08	0.75	1	-	0.05	-	0.015	-	0.03	0.02	0.07
HSQ	LS17	70	0.035	0.08	0.75	1	-	0.05	-	0.015	-	0.03	0.02	0.07
HSQ	LS18	70	0.035	0.08	0.75	1	-	0.05	-	0.015	-	0.03	0.02	0.07

MECHANICAL PROPERTIES										
Grade	TDC	Coating (GSM)	Yield Strength (Mpa)		Ultimate Tensile Strength (Mpa)		Elongation (50% GL)	Surface Roughness (Ra)	Skin Passed	Tension Levelled
			Min	Max	Min	Max				
DQ	RTG1*	80	250	350	-	410	32	0.8 - 1.6	Yes	Yes
DQ	RTG1*	125	120	350	-	410	32	0.8 - 1.6	Yes	Yes

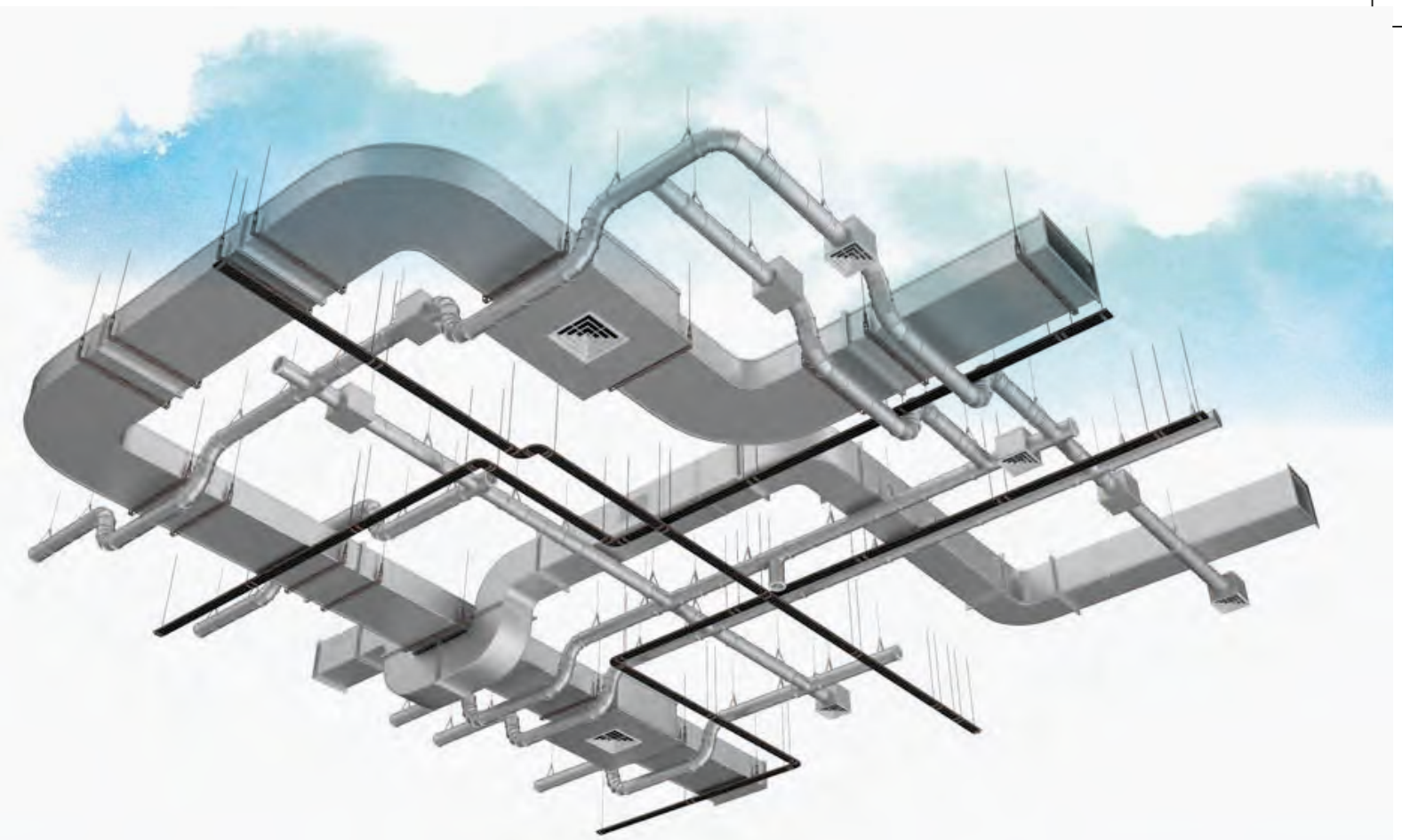
* TDC's have Inkjet Printing for Product Identification

CHEMICAL PROPERTIES														
Grade	TDC	N (PPM)	C%		MN%		Si%		S%		P%		Al%	
			Min	Max	Min	Max	Min	Max	Min	Max	Min	Max	Min	Max
DQ	RTG1	70	0.035	0.07	0.15	0.40	-	0.04	-	0.02	-	0.025	0.02	0.09
DQ	RTG1	70	0.035	0.07	0.15	0.40	-	0.04	-	0.02	-	0.025	0.02	0.09

For **RETAIL**

Advantages:

- Absolute Flatness
- Enhanced Corrosion Resistance
- Improved weldability



For **OTHERS**

Advantages:

- Superior Paint Adhesion
- Enhanced Corrosion Resistance
- Optimum Malleability and Ductility

MECHANICAL PROPERTIES										
Grade	TDC	Coating (GSM)	Yield Strength (Mpa)		Ultimate Tensile Strength (Mpa)		Elongation (50% GL)	Surface Roughness (Ra)	Skin Passed	Tension Levelled
			Min	Max	Min	Max				
IF	CEO1*	120	-	190	-	330	-	0.8 - 1.6	Yes	Yes
IF	CEO4*	80	-	190	270	330	140	0.8 - 1.6	Yes	Yes
CQ	CG10*	275	-	-	-	-	-	-	Yes	Yes
CQ	CG15*	275	256	360	320	500	26	0.8 - 1.6	Yes	Yes
DQ	CG25	120	250	360	320	500	26	0.7 - 1.5	Yes	Yes
DQ	CG27*	220	250	360	320	500	26	0.7 - 1.5	Yes	Yes
CQ	CG41*	180	256	360	320	500	26	0.7 - 1.5	Yes	Yes
DQ	GLX1	120	250	350	-	410	32	0.8 - 1.6	Yes	Yes
IF	GLX3	120	-	190	-	330	40	0.8 - 1.6	Yes	Yes
IF	ZCU1*	120	-	240	-	370	36	0.5 - 1.5	Yes	Yes
IF	ZCU2*	120	-	240	-	370	36	0.5 - 1.5	Yes	Yes

* TDC's DO NOT have Inkjet Printing or UV Printing for Product Identification

Product Identification

Galvano comes with Tata Steel's assurance of quality. Each coil is marked with invisible and chemically neutral UV ink as a guarantee of its authenticity. UV print can be viewed with the help of a UV torch, as illustrated below.



SKU Basket/ Product Offerings

Grades														
Width/ Thickness	CQ/DQ		DDQ		EIF		IFHS-340P		HSLA-340LA		HSLA-380LA		C-Mn 440W	
	Min	Max	Min	Max	Min	Max	Min	Max	Min	Max	Min	Max	Min	Max
0.50 - 0.54	1100	1350	1200	1250	1100	1430	-	-	-	-	-	-	-	-
0.55 - 0.59	1100	1350	1200	1250	1100	1430	-	-	-	-	-	-	-	-
0.60 - 0.64	1100	1430	1200	1250	1100	1460	1100	1350	-	-	-	-	-	-
0.65 - 0.69	1100	1500	1200	1250	1100	1520	1100	1350	-	-	-	-	-	-
0.70 - 0.74	1100	1500	1200	1300	1100	1520	1100	1350	-	-	-	-	-	-
0.75 - 0.79	1100	1500	1200	1520	1100	1520	1100	1350	-	-	-	-	1050	1225
0.80 - 0.89	1100	1520	1200	1520	1100	1520	1100	1350	-	-	-	-	1050	1225
0.90 - 0.99	1100	1520	1100	1520	1100	1520	1100	1350	-	-	-	-	1050	1250
1.00 - 1.24	1100	1520	1100	1500	1100	1520	1100	1350	1100	1300	1100	1100	1050	1300
1.25 - 1.49	1100	1520	1100	1500	1100	1520	1100	1350	1100	1300	1100	1100	1050	1300**
1.50 - 1.79	1100	1520	1100	1500	1100	1500	1100	1350	1100	1300	1100	1100	1050	1400
1.80 - 2.00	1100	1520	1100	1500	1100	1500	1100	1350	1100	1300	1100	1100	1050	1400
***All widths are after 20 mm trimming post CGL2"													*** TDC's available 0.784mm onwards **Range 1.4-1.5 mm available in 1400 max"	

Thickness Tolerance Guarantee

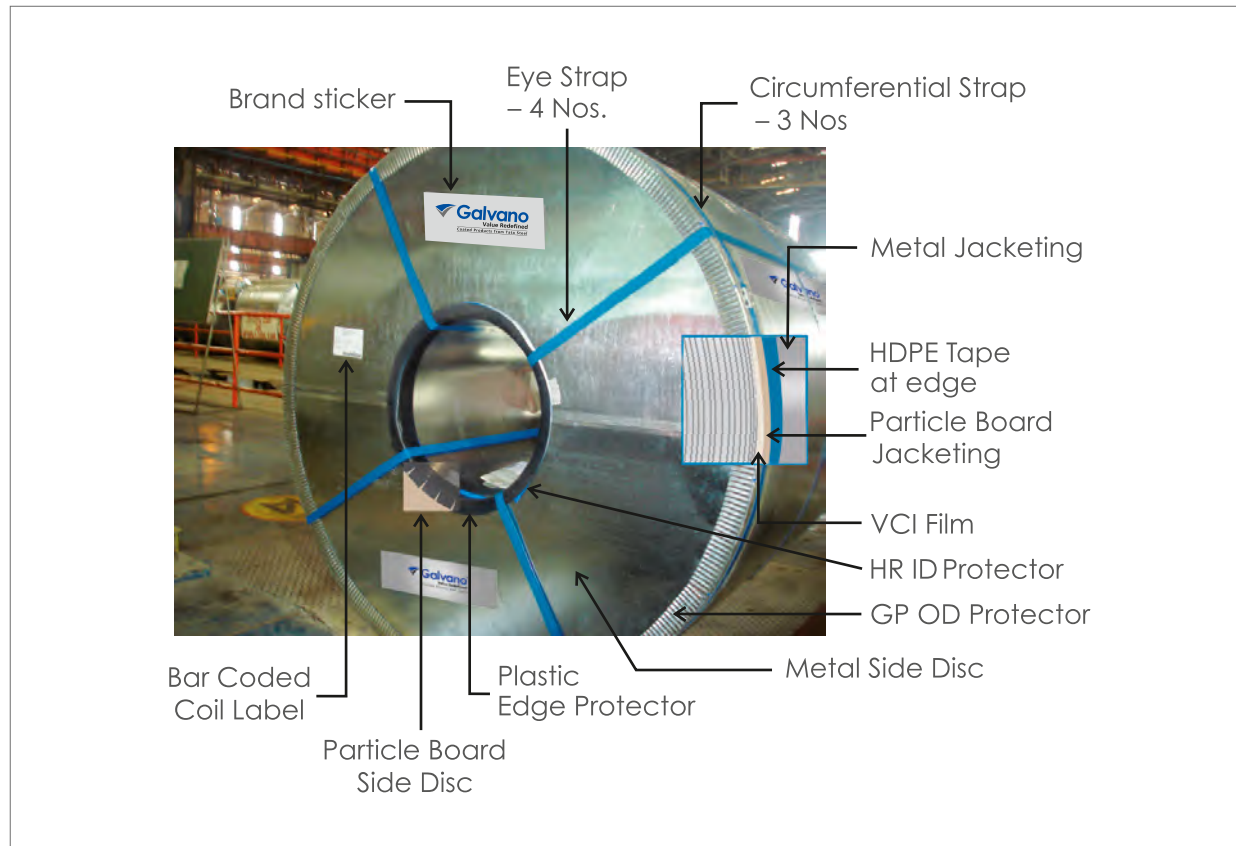
Thickness Band (in mm)	BIS (as per IS 513)	Galvano
0.40 - 0.99	+/- 0.06 – 0.08	+/- 0.04 max
1.00 - 1.49	+/- 0.11 – 0.12	+/- 0.05 max
1.50 - 2.00	+/- 0.12 – 0.14	+/- 0.06 max

- Thickness shall be measured at any point across the width not less than 25 mm from the edge
- For specified strength levels of Re+ 360 N/mm2 and greater, increase the thickness by 10% applying normal rounding-off procedural
- All above tolerances are based on Base Metal Thickness (BMT)



Packaging and Labelling

Coils



Storage Instructions

In addition to Zinc, Galvano can have the following secondary passivation based on customer requirements, all of which are ROHS compliant and eco-friendly-

- ✓ Cr3+
- ✓ Cr-Free
- ✓ Oiled

Additionally, the following measures need to be taken for better rust prevention in sheets:



Storage Indoors in dry, well ventilated condition



Do not leave uncovered sheets in the open



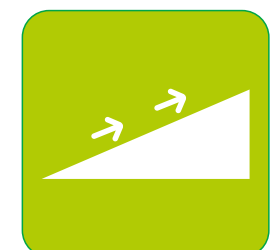
Use supplied HDPE & LDPE to cover unused sheets



In case of storage outdoors, erect simple scaffolding with loose fitting tarpaulin or waterproof sheets to allow air circulation

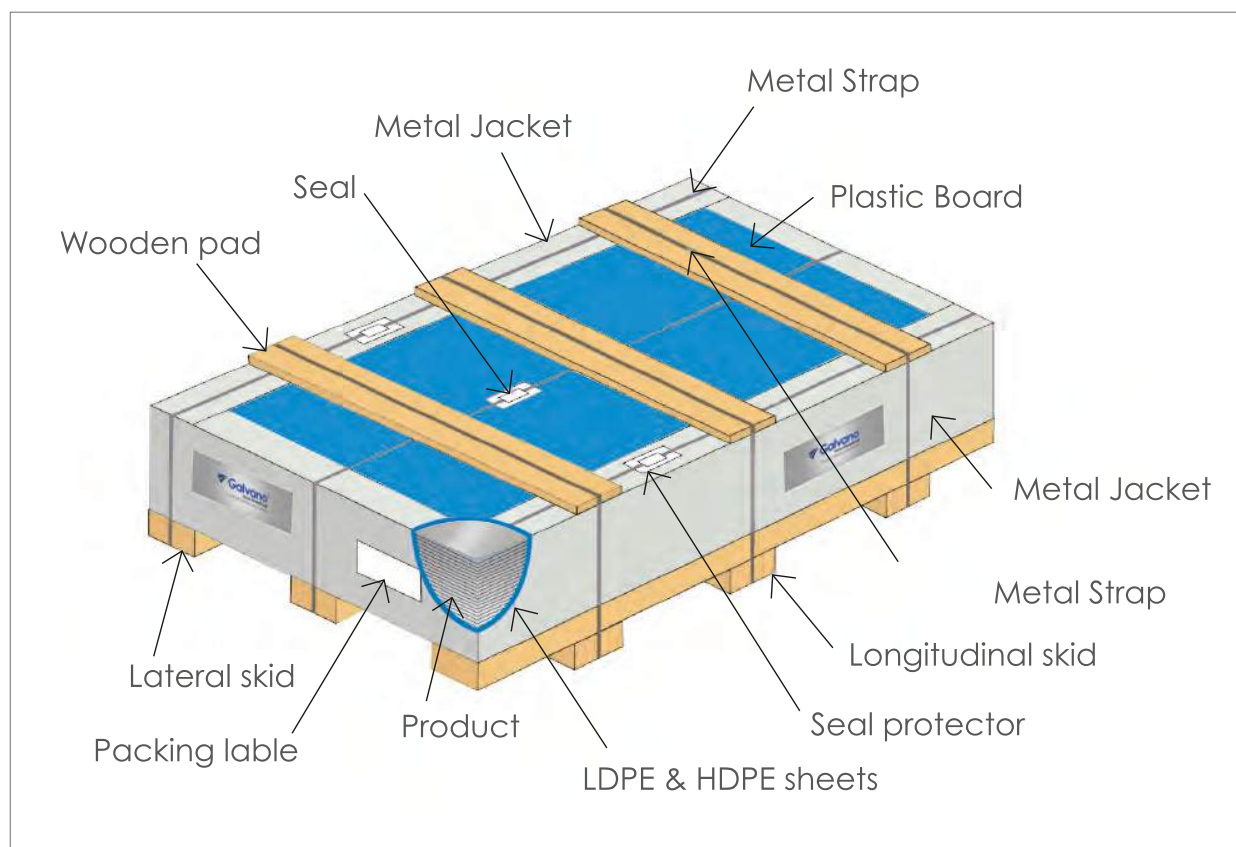


Ensure that storage area is not prone to water accumulation



Ensure that the sheets are stored over saddles or wooden blocks placed properly to avoid toppling of sheets

Sheet



PAN-India Service Centres

Galvano meets the diverse needs of its customers through a strong distribution channel of distributors and service centres.

With ACE+, Galvano has taken its service capabilities to the next level and set a benchmark in the industry. This is a service centre development programme, a first in the steel industry, to enhance capability to deliver excellence in product and service customisation across a network of service centres.

Each authorised service centre is equipped with state-of-the-art facilities and processes for world-class handling, storage and processing to deliver on the highest parameters of quality and minimise wastage.



North Zone		
• Bhagwati Steel Processor	Chandigarh	Level II
• DDHK	Kanpur	Non ACE
• Dhramvir (3rd Party - Sri Ram)	Ludhiana	Non ACE
• GR Gupta & Bros.	Ghaziabad	Level III
• Hansraj Steels	Faridabad	Level I
• Mangla Sons	Mohali	Level III
• OVS Ispat	Kanpur	Non ACE
• Pelican Dossier (3rd Party - Apana Steel)	Jaipur	Non ACE
• Punjab Agro (3rd Party - Shri Radha Udyog)	Ludhiana	Level II
• R S Steel	Ghaziabad	Level I
• Rakesh Steel (3rd Party - Prompt)	Faridabad	Level I
• Sangeeta Steel (3rd Party - Technico Metal)	Ludhiana	Level I
• Sanjeev Industrial (3rd Party - Reliance Fab)	Reliance	Level II
• TSPDL Faridabad (3rd Party - Max Steel)	Bhiwadi	Level II
• TSPDL, UK	Pantnagar	Level III
• Vatika Tracom (3rd Party - Shriram & Rungta Cutter)	Jaipur	Non ACE

East Zone		
• Birma Insdutries	Ranchi	Non ACE
• BMW Ventures Ltd.	Patna	Non ACE
• Bubna Commercial Pvt Ltd	Hooghly	Level I
• PSPL Steel (Unit 1)	Jamshedpur	Non ACE
• RS Bokaro Metal	Jamshedpur	Non ACE
• Sagar Steel	Guwahati	Level I
• Sudhisha Enterprises (3rd Party-Asoka Skymetal Pvt Ltd)	Jamshedpur	Level I

West Zone		
• ANM Ispat	Ahmedabad	Level I
• Naresh Steel	Mumbai	Level III
• Rohit and Company, Ahmedabad	Ahmedabad	Level III
• SKM, Indore	Indore	Level I
• SKM, Mumbai	Mumbai	Level III
• TSPDL, Pune	Pune	Level III

South Zone		
• CMG	Chennai	Level I
• GK Steel	Bangalore	Level II
• GMS	Chennai	Level III
• HST	Secunderabad	Non ACE
• Kummenchery Steel	Cochin	Level III
• Ramsaroop & Sons	Bangalore	Level III
• Shiva Ferric Pvt Ltd.	Bangalore	Level I
• Sri Balaji Traders (3rd Party - Ramanashekar)	Chennai	Non ACE
• Sri Sai Krishna Steel	Secunderabad	Level II
• Thirupathy Steel Processors	Chennai	Non ACE
• TSPDL (3rd Party - Sagittarius Metal)	Bangalore	Level II
• TSPDL, Chennai	Chennai	Level III



Sales Offices

North Zone

Chandigarh & Himachal Pradesh

M/s Tata Steel Ltd.
C/o MRH Enteprise, SCO-16
1st Floor, Sector - 26,
Madhya Marg
Chandigarh 160019

Faridabad

M/s Tata Steel Ltd.
2nd Floor, Business Centre
33-B NIT, Faridabad 121001

Ghaziabad

M/s Tata Steel Ltd.
Plot No. 1227-1229,
G.T. Road, Lalkuan,
Ghaziabad 201001

Jaipur

M/s Tata Steel Ltd.
G - Business Park, 6th Floor
D-34, Near Agrasen Circle,
Subhash Marg
C-Scheme, Jaipur 302001

Kanpur

M/s Tata Steel Ltd.
16/97, Navaroz Building,
Mahatma Gandhi Road
The Mall, Kanpur 208001

Ludhiana

M/s Tata Steel Ltd.
C-44-47, Phase-II, Focal Point
Majestic Auto Road,
Ludhiana 141010

New Delhi

M/s Tata Steel Ltd.
Mira Corporate Suits
Plot No. 1 & 2, Ground Floor
Unit No. A-0 (Block - A),
Ishwar Nagar
New Delhi 110065

South Zone

Bangalore

M/s Tata Steel Ltd.
Jubilee Building (next to Gautam Hotel)
A' Wing, 2nd Floor, 45, Museum Road
Bangalore 560025

Chennai

M/s Tata Steel Ltd.
8th Floor,
Chettinad Sigapi Achi Buinding
18/3, Rukmini Lakshmi pathi Road
Egmore, Chennai 600008

Hyderabad

M/s Tata Steel Ltd.
Gummidelli Towers - 6th Floor
1-10-39 to 44, Begumpet, Airport Road
Hyderabad 500003

Kochi

M/s Tata Steel Ltd.
6th floor, National Pearl Star High
School Junction
Palarivattom - Edappally Rd,
Devankulangara, Mamangalam
Elamakkara, Kochi 682024

East Zone

Bhubaneswar

M/s Tata Steel Ltd.
2B, Fortune Tower,
Handrasekharpur
Bhubaneswar 751023

Guwahati

M/s Tata Steel Ltd.
Subham Velocity, 4th floor
Honuram Boro Path, Opp. Wallford
G.S.Road, Guwahati 781005

Jamshedpur

M/s Tata Steel Ltd.
B Road East. Near Chamaria
Guest House, Bistupur,
Jamshedpur, Jharkhand 831001

Kolkata

M/s Tata Steel Ltd.
5th Floor 43, Jawaharlal Nehru Road
Kolkata 700071

Patna

M/s Tata Steel Ltd.
Orchid mall
(Oppo. of A.N. College Gate)
401 Boring Road, 4th Floor,
Patna 800001

West Zone

Ahmedabad

M/s Tata Steel Ltd.
2, Premchand House Annexe
2nd Floor, High Court Way
172/2, Ashram Road
Ahmedabad 380009

Indore

M/s Tata Steel Ltd.
3rd Floor, NRK Business Park,
Block B-1, PU-4,
Scheme No.- 54,
Vijay Nagar Square
A B Road, Indore 452010

Mumbai

M/s Tata Steel Ltd.
3rd Floor, One Forbes
1, Dr V B Gandhi Marg
Fort Mumbai 400001

Nagpur

M/s Tata Steel Ltd.
Museum Road, Civil Lines
Nagpur 440001

Pune

M/s Tata Steel Ltd.
Office No. 6 & 7,
Second Floor, Wing B,
Great Eastern Plaza,
Old Airport Road
Yerwada, Pune 411006

Raipur

M/s Tata Steel Ltd.
Magneto Offizo
Office no - 539, 5th floor,
Labhandi, NH-6
Raipur 492001

Toll free Helpline: 1800 108 8282

